

WOW NEWS

LUFTON COLLEGE

FLYING START

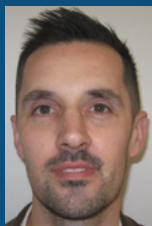
This first term back has been truly inspiring! Alongside welcoming returning students, it's been a joy to meet our many new faces and support them as they embark on their journeys here at Lufton College.

In the World of Work team, we've been working closely with each student, having those essential early discussions to understand how best to tailor work-related activities uniquely suited to their interests and needs. Setting meaningful goals for work experience, volunteering, and enterprise can be a powerful motivator for students, but we also understand that some may not yet have a clear sense of direction – and that's completely okay.

Our approach is all about providing as many experiences and choices as possible, helping students make informed decisions about their employment pathways and feel confident and empowered in the direction they choose. I'm excited to continue working alongside students, families, carers, and our wonderful team in the term ahead.

Warm regards,

Matthew Bird
Head of Employment & Careers



ANNA-GRACE THORNE (SUPPORTING STUDENTS)
TEACHING ASSISTANT

WORKING TO SUCCESS

Alongside our many external work placements, Lufton College also offers internal World of Work sessions, where students practice essential skills by following structured processes and actions to complete tasks. Anna-Grace, one of our dedicated teaching assistants, has been instrumental this term in guiding and supporting students in these sessions.

These processes help students develop their ability to listen, follow instructions, and perform a variety of tasks—skills that are essential for gaining as much hands-on work experience as possible. We're proud to provide these valuable opportunities, building confidence and competence for each student's future.





IN THE COMMUNITY FOR THE COMMUNITY

Whether on work placements, volunteering, enrichment activities, or pursuing the Duke of Edinburgh Award, our students consistently give their best when engaging with the community. The skills, dedication, and enthusiasm they bring to supporting others are qualities we deeply value here at Lufton College.



ANIMATE, INSPIRE & CREATE



Last term, we had the pleasure of hosting a special guest at Lufton College: Jason Venus, owner of Drawmill Animation. Jason graciously spent time with a group of students eager to explore animation and illustration, offering an in-depth look at the journey to becoming an animator, the tools and software used, potential career paths, and ways to seize future opportunities in the field.

The students were captivated—especially by the animated clips Jason shared—and left the session feeling inspired, determined, and more motivated than ever to learn about careers in animation. In the coming weeks and months, we're excited to expand our employer engagement programme, offering a wider variety of experiences for all our students.

Drawmill[™]
animation, illustration & art



**GREAT
JOB!**

THANK YOU!

Whether you are a student, family member, carer, or part of our supportive community, we want to extend our heartfelt thanks for all that you do to make Lufton College a thriving, inspiring place. Each of you plays a vital role in helping us create a nurturing and empowering environment.

WOW LINKS

Here are some links related to the world of work at Lufton College. We offer a wide variety of information on placements, internships, apprenticeships, and current job opportunities. We encourage students and their parents or guardians to review these resources regularly. By doing so, we can help our young people achieve the best possible outcomes while focusing on the subjects and activities they are passionate about. Supporting our students in their next steps of development remains our top priority.

- Visit www.direct.gov.uk/NationalCareersService to explore and research different careers.
- If you are unsure about future career ideas go to www.direct.gov.uk/NationalCareersService and click on the 'skills assessment' link.
- To discover more about different job roles and industries including the varying tasks, skills and qualifications required check out the Imagine the Possibilities Skills Maps [Skills Maps \(somerset-ebp.co.uk\)](http://Skills Maps (somerset-ebp.co.uk)).
- Access to Work - <https://www.get-disability-work-support.service.gov.uk/apply/clinically-extremely-vulnerable?lang=en>