



## Cambian Northampton School

*Specialist Day School for SEMH  
(Social, Emotional & Mental Health)*

- **Mixed gender • 11-16 years**
- **Up to 39 weeks • Day Placements**



## Welcome

Cambian Northampton School is an independent specialist provision that provides quality and personalised education for young people ranging from ages 11 to 16 with on-going social, emotional and mental health difficulties (SEMH).

Our well-qualified and experienced staff team work continuously to provide positive education experiences that combine high expectations for our students with sensitivity to their individual needs. The school offers a nurturing and caring environment which allows all students to thrive and achieve their full potential. We recognise and reward every single achievement and students are encouraged to participate in a wide range of activities that enrich their spiritual, moral, social and cultural development.

We have taken a broader, more flexible approach to the curriculum so that it is not only tailored to the needs, skills and interests of the students but also provides a balance of academic, artistic, cultural, vocational and civic elements. We extend learning beyond the confines

of the classroom to build essential independent skills, foster teamwork and to promote community collaboration through work experience, community work and school trips.

We know that choosing the right educational provision is critical for the success of your child. Rest assured that your child's safety, well-being, social and emotional development along with accessing a range of academic Awards and Qualifications is at the heart of what we do. Equally, we recognise that our effectiveness as a school is highly dependent on strong collaboration between home and school to support our young people in achieving their full potential.

I hope this prospectus will help you learn more about our school. We encourage you to visit us at school and very much look forward to meeting with you.

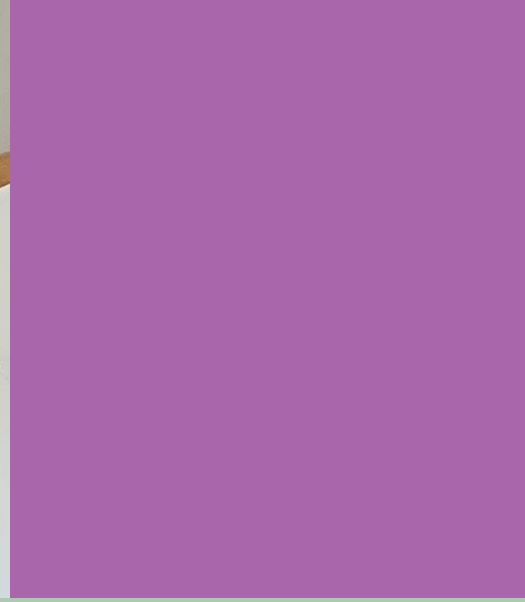
Yours sincerely

*Leanne Dodds*

Headteacher

67a Queens Park  
Parade,  
Kingsthorpe,  
Northampton  
NN2 6LR

01604 719711



# About our school

## Ethos and Vision

At Northampton School our fundamental belief is that all young people are entitled to achieve their full potential, at whatever level this may be. Pupils are supported to develop socially and emotionally, manage their behaviour accordingly and recognize the benefits derived from a physically active lifestyle.

Underpinning the above belief is the desire to prepare students for one, or more of the following.

- Further education and study.
- Independent or supported living.
- Employment or apprenticeships.
- To gain the skills required to contribute to society and be responsible citizens.

Northampton School aims to meet the needs of individual pupils by "personalising" the curriculum in response to these needs. We support pupils within their National Curriculum year group with appropriate National Curriculum Programmes of Study, differentiated to provide access and to ensure that all pupils receive a broad and balanced education. Some pupils may be taught outside of their year group depending on their required behavioural and learning needs. In addition some pupils will have modifications to the full National Curriculum entitlement .

Northampton School will provide an environment in which all of its members feel safe, valued and respected. Every

pupil will be encouraged to acquire a sensitivity to the feelings and needs of others, accept personal responsibility for his or her actions, and treat all property with due care, irrespective of its ownership. The school will celebrate achievement and promote pupils' achievement through praise whenever appropriate. The School identify the academic levels of students and encourage students by accreditations on a termly basis. Behaviour that undermines the happy environment that is a hallmark of school life, such as bullying, insensitivity, discrimination, bad language or acts of intolerance, will not be accepted.

By knowing every pupil socially, emotionally and academically, we can employ strategies and practices giving the opportunity for each pupil to flourish and acquire the confidence and self-belief to achieve a fulfilling and successful future and to become confident, accomplished and self-valuing young adults. At our school we know and support our pupils with our pastoral care being at the heart of the way we look after our pupils. Our school offers a curriculum which is balanced and broadly based which actively:

- promotes the spiritual, moral, cultural, mental and physical development of pupils at the school and of society
- prepares pupils at the school for the opportunities, responsibilities and experiences of later life.

## Student Profile

- Mixed gender, ages 11-16
- Emotional behavioural issues
- History of placement breakdowns
- Learning difficulties





# About our school



## School Mission Statement

Our vision is to create a safe and caring community where there is a passion for learning and mutual respect for all. Young people have the opportunity to develop to their full potential in preparation for their future life.

## Values

Education at Northampton School is designed to enable pupils, individually and collectively, to take control of their lives. Each pupil has an entitlement to study the National Curriculum, modified as necessary to suit their individual needs and in line with the requirements set out in their statement of Special Educational Need or EHC Plan.

The overall ethos is designed to create an atmosphere that promotes co-operation and mutual respect between staff and pupils. We support an environment where everyone feels valued.

## Uniform

The school uniform is: black shoes or black trainers (no coloured markings, including white), black trousers, school polo shirt, school jumper. If a coat is worn it must be taken off when entering school and it will be kept securely until needed. If a pupil is in the incorrect uniform then the parent/carer must inform the school as to the reason why by either phoning the school office or providing a written note.

If a pupil is not in the correct uniform then the school reserves the right to send/take a pupil home in order for them to change into the correct uniform so that they can be brought back to school.

# Referral route



## Admission

The school, which is co- educational, provide places for young people aged 11-16. Northampton School is non-denominational and has a secular ethos respecting the cultural needs and religious beliefs of all.

## Admission Criteria

- The school is specially focused on providing education for young people with on-going social, emotional and mental health difficulties and associated 'challenging behaviours', which may have resulted from their past experiences and may prevent them from successfully functioning within the community and developing to their full potential.
- We only admit young people whose places are funded by a U.K local authority

## Referral process

Admission into the school is through an initial referral from a local authority.







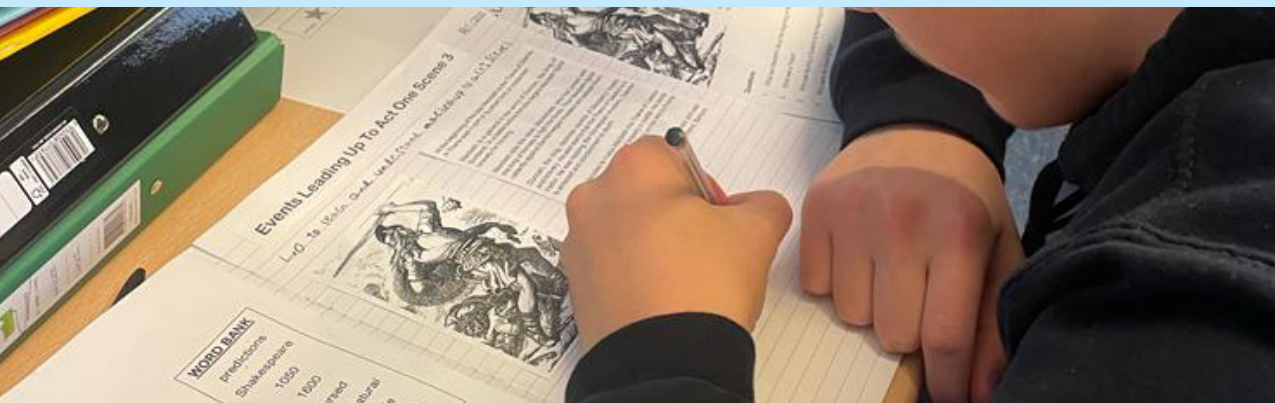
## Transition

Transitioning into a new environment can be a daunting experience for young people. Northampton School is very sensitive to this and works collaboratively with their previous educational provider to ensure that they feel safe, comfortable and at ease in school. We will hold an initial meeting with the young person and their parents/carers before they come into school. We will liaise with their previous school and other relevant agencies e.g. social care to ensure continuity and ease of transition. Some pupils may start their education with us on a part time-table, which is regularly reviewed and then gradually increased. School staff may also provide outreach education to a young person if we feel that this is the best way to re-engage with their educational studies.

Outreach Education may occur off-site at the local library or another suitable venue. Staff will work with the young person with a view to gradually re-engage them back into full time education in school.



# Curriculum



## Curriculum Ethos and Aims

The aims of the curriculum are:

1. To be a place of learning, where all pupils are encouraged to become independent and effective learners in their own right, in order to realise their full potential.
2. Provide equal opportunities for all students regardless of gender, aptitude, cultural, ethnic or religious background.
3. Emphasize the importance of language, number, aesthetic, physical and social areas of learning and the associated competency in them.
4. Ensure that all pupils have the opportunity to follow the National Curriculum with individually designed programmes as appropriate.
5. Provide continuity and progression from the point of transfer to the time of leaving school.
6. Develop industrial and economic awareness through the various subject areas, work related and vocational learning and work experience.
7. Help pupils develop personal, spiritual and moral values, to grow in social and personal maturity and to promote tolerance, sensitivity and mutual respect in personal relationships.
8. Challenge and deal both quickly and effectively with all forms of bullying, aggression, racial, sexual and verbal harassment and abuse, insisting on resolving conflict, wherever possible, in non-violent ways, and through our teaching, to address the underlying causes of these issues.
9. To be a school, which celebrates achievement, encourages initiatives, develops responsibility, and fosters a pride in the school, its environment and its community.

## Initial Assessments

All young people who attend Northampton School will be asked to sit a Literacy and Numeracy test using BKSb baseline assessment as an initial screening tool. Information will also be gathered from their previous educational provider.

Subject staff for English, Maths and Science will, after an initial assessment period, give the pupil an assessment level. These levels currently consist of steps from 1-9 that run alongside the BKSb programme, these are age related targets. Students work on a pathway plan and gain certificates on a termly basis that work towards their final qualifications.

An end of year target grade will then be given by the subject specialist and the pupil's progress will be monitored and tracked each term to check that progress is being made and that the pupil is "on track".





# Curriculum



The Curriculum at Northampton School offers a range of academic and vocational options.

Linguistic	English • Literacy • Cultural
Mathematical	Maths • Numeracy • Science
Scientific	Science • Land Based studies Forest School • Animal Care
Creative	Performance Studies • Media Music • Art Award
Technological	ICT • Resistant Materials • Food Technology Textiles • Motor vehicles • Construction
Aesthetic	Art and Design • Music
Physical	Physical Education/Leisure • Activities • Team Building Activities • Sports Leaders Awards
Human & Social	PSD • Cultural Studies • History Religious Studies

## Qualifications we offer include:

- ✓ GCSEs
- ✓ Functional Skills
- ✓ Entry Level
- ✓ Accredited Unit Awards
- ✓ ASDAN Level 1 + Level 2 Qualifications
- ✓ ASDAN Bronze/Silver/Gold
- ✓ ASDAN short courses
- ✓ The Art Award
- ✓ Sports Leaders qualifications
- ✓ Vocational courses such as Animal care and mechanics (others are available)
- ✓ Horse therapy accreditation course

## Awards and Qualifications

Pupils will study a range of subjects with a strong emphasis on a relevant and a personalised curriculum. Pupils, depending on their ability, will have the opportunity to gain recognisable qualifications and awards at:

GCSE 9-1	Functional Skills	Entry Level	Accredited Unit Awards
----------	-------------------	-------------	------------------------

Northampton School's current qualifications and awards are validated by

AQA	OCR	ASDAN	Art Award	Sports Leaders	Eduqas
-----	-----	-------	-----------	----------------	--------

### RESULTS

**3 x GCSE  
Maths**

**at Grade 5**

**3 x GCSE  
English**

**at Grade 4**

**3 x GCSE  
Religious Education**

**at Grade 3**

**14 x ASDAN**

**2 x Gold  
3 x Silver  
9 x Bronze**





# Management of Behaviour

We aim to promote good behaviour through a supportive and consistent approach which includes the use of positive encouragement, rewards and incentives. At all times the school will celebrate success and reward good work and behaviour.

## Rewards


Throughout the school, good behaviour is promoted at all times. Northampton School believes that it is important to acknowledge and reward in a positive way those pupils who demonstrate a high level of co-operation, good behaviour, participation, engagement and effort. The School also acknowledges and rewards those pupils who make recognisable progress with regard to the above. We endeavour to raise children's self-esteem by using praise to encourage and acknowledge positive actions and attitudes.

## Rewards System

### Points are given for:

- Following instruction
- Being respectful
- Work completed
- Objectives met
- Attending lessons

- ✓ Verbal praise
- ✓ Points System/Banking system
- ✓ Positive phone call home
- ✓ Student payslip identifying points earned
- ✓ Weekly payslips to run in line with the points system
- ✓ Subject/activity certificates
- ✓ Head's certificate for outstanding attitude and/or work
- ✓ Outstanding pupil work

 <b>Northampton School</b>				
Name:	Group:	Week Commencing:	Overview	Total:
Earnings		Deductions		Weekly Earnings:
Potential Earnings: 600		Absences:		Earnings to date:
		Dress Code:		Wages withdrawn:
		Expenses:		
		Sick:		Total Deductions:
		Harassment:		Gross Weekly:
		Total:		Earnings to date:

**Weekly reward trip** based on consistency with regard to points.

**Reward trips displayed** weekly and termly (well in advance).

**Tiered system for reward trips** Platinum, Gold, Silver, Bronze. Catch up



## Additional Information

### Complaints Procedures

We know there will be times when students, carers, parents or placing authorities will want to give us feedback about our school and we will always be happy to hear from you. If you feel that you would like to make a suggestion, let us know about something you were pleased with or tell us we did not meet your expectations, please contact the school via the contact details at the front of this prospectus.

A complaints procedure allows for both formal and informal complaints. Informal complaints will be dealt with quickly, while formal complaints can be made in writing.

Our full complaints policy is available from the school on request. This policy is designed to help you raise concerns and ensures your complaint will be listened to and dealt with fairly.

Should you wish to take your complaint further or feel you are unable to discuss the details with the school, please contact the director of education detailed below, especially if your complaint relates to the school leadership.

### The Proprietor

The proprietor of the school is Farouq Sheikh, Chair of the CareTech Board. The representative of the Proprietor of the school, whose address for correspondence during both term times and holidays, is:

Andrew Sutherland,  
Operations Director Education,  
Metropolitan House,  
3 Darkes Lane,  
Potters Bar, Hertfordshire EN6 1AG.

The telephone number on which the representative of the proprietor may be contacted is 07701314378.