

Specialist Residential Complex Trauma Services

Children aged 6-12

Every child is different.
We make sure their care is too.



We have over 20 years experience working with children who have suffered significant complex trauma. With homely and welcoming environments every interaction we have with our children is

therapeutic in nature. Our approach is underpinned using **DDP** (dyadic developmental psychotherapy) and **PACE** Model (Playfulness, Acceptance, Curiosity and Empathy) which includes therapeutic parenting.

If you would like more information on
our services call us 0161 507 3723

We aim to address the immediate and long term consequences of children's exposure to maltreatment and other multifaceted traumatic experiences. Exposure that results in a loss of core capacities for self-regulation and interpersonal relatedness.



Children in our services have typically suffered more than seven of the following "Adverse Childhood Experiences"

- Physical Abuse
- Sexual Abuse
- Emotional Abuse
- Neglect
- Domestic Violence
- Separation Loss of Parent
- Parental Substance Misuse
- Parental Criminality
- Parental Mental Health Problems
- Pet Abuse

The Impact of Complex Trauma:

- Disrupts the integration of Mind – Body – Emotions – A child's social skills
- Projects their trauma onto everything – everything is a threat
- Defence mechanisms are taken over by their trauma
- Disrupts their attachment style, play and exploration, sociability, sexuality

We support the recovery of children through our integrated team:

CARE

The care team is made up of over 150 staff across our 11 Specialist Residential Care Homes, who are all trained in therapeutic approaches and complex trauma.

CLINICAL

Our holistic therapeutic package is informed and supported by a dedicated clinical team, comprising of Clinical Psychology, Psychotherapy, Art and Drama Therapy, Occupational Therapy and Life Story Work.

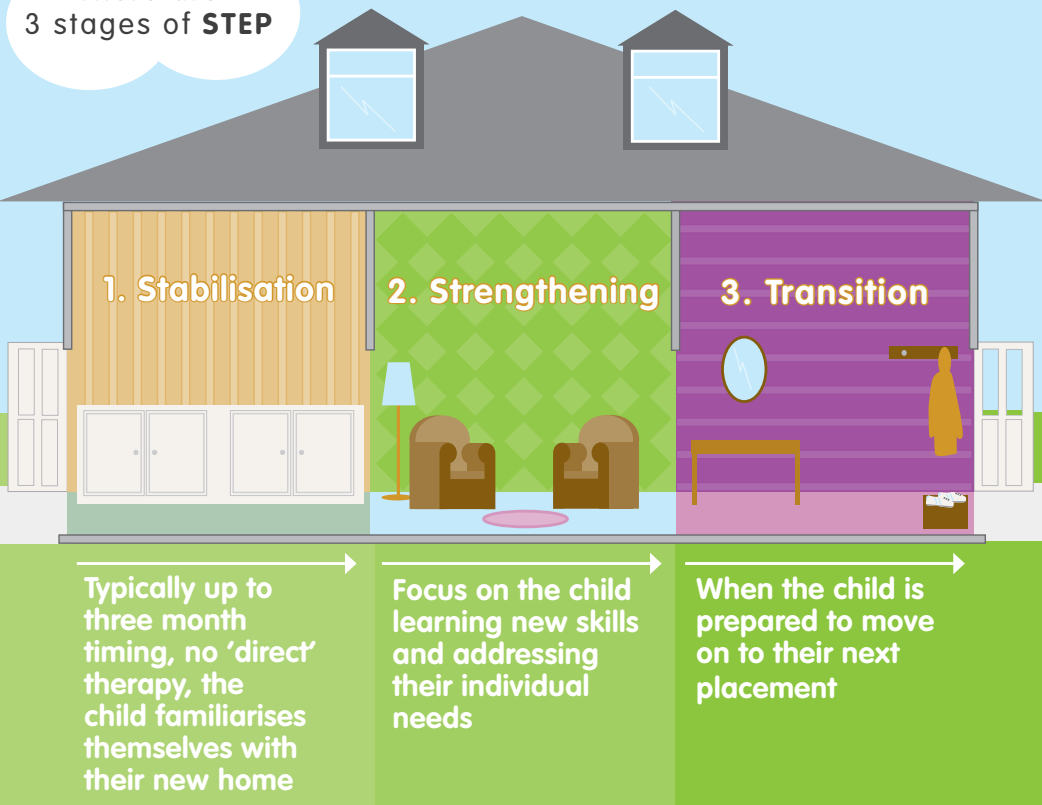
EDUCATION

Our education team offer access to Cambian SEMH school's within each locality.

All the work carried out in our service is based on our therapeutic approach known as the **STEP** Framework.

S Sensory Supportive
T Totally inclusive
E Enabling
P Progressive

There are 3 stages of **STEP**



The Cambian Assessment of Progress

The Cambian Assessment of Progress (CAP) is a rating scale which is marked out of 100 and used to determine and track the progress of each child in our care.

We assess how the individual functions within 4 key domains

How they function psychologically

How they manage their social and emotional skills

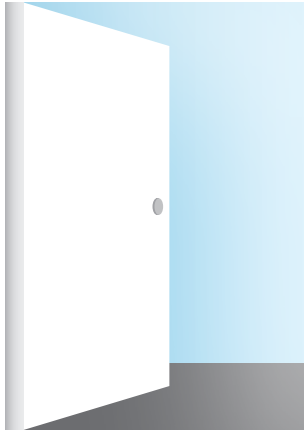
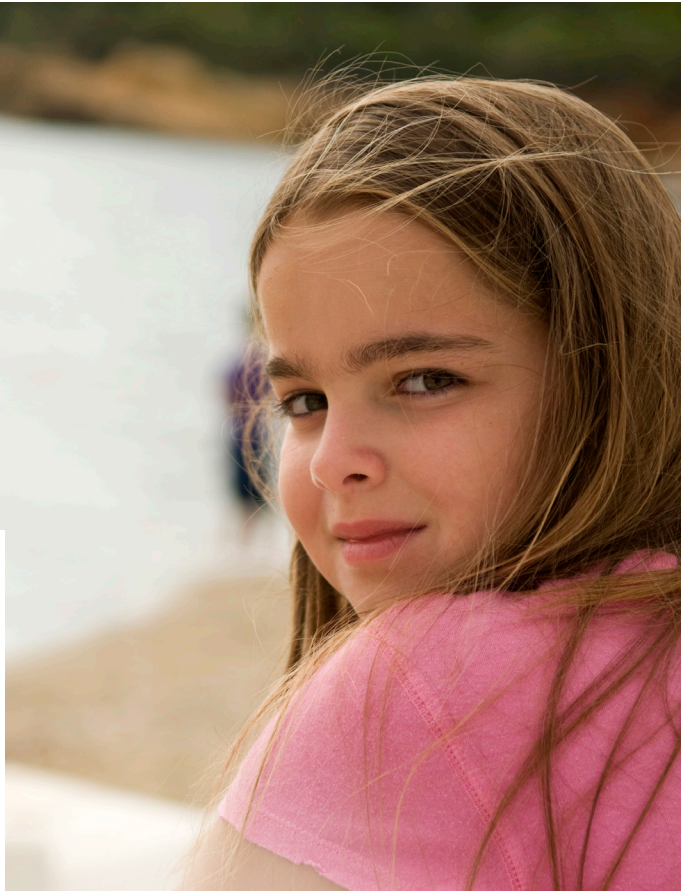
How they manage their learning needs

How they manage their general health and wellbeing

Why residential care instead of fostering?

Children that have suffered significant trauma can find it difficult to form positive and trusting relationships with adults.

Our homes create a caring family life environment, which is underpinned by a clear therapeutic framework, supported by highly skilled education, care and clinical teams, enabling our children to learn to form appropriate and positive adult attachments.



Outcome

Our aim is to see every child progress such that they can safely and positively transition either back to their family or a foster care placement when the time is right for them.

If you would like more information on our services call us 0161 507 372