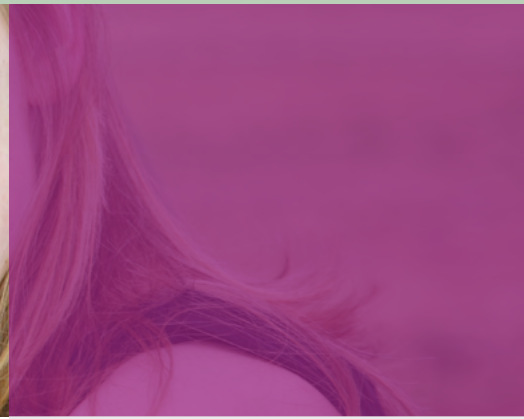


About our school



Ethos and Vision

At Northampton School our fundamental belief is that all young people are entitled to achieve their full potential, at whatever level this may be. Pupils are supported to develop socially and emotionally, manage their behaviour accordingly and recognize the benefits derived from a physically active lifestyle.

Underpinning the above belief is the desire to prepare students for one, or more of the following.

- Further education and study.
- Independent or supported living.
- Employment or apprenticeships.
- To gain the skills required to contribute to society and be responsible citizens.

Northampton School aims to meet the needs of individual pupils by "personalising" the curriculum in response to these needs. We support pupils within their National Curriculum year group with appropriate National Curriculum Programmes of Study, differentiated to provide access and to ensure that all pupils receive a broad and balanced education. Some pupils may be taught outside of their year group depending on their required behavioural and learning needs. In addition some pupils will have modifications to the full National Curriculum entitlement .

Northampton School will provide an environment in which all of its members feel safe, valued and respected. Every pupil will be encouraged to acquire a sensitivity to the feelings and needs of

others, accept personal responsibility for his or her actions, and treat all property with due care, irrespective of its ownership. The school will celebrate achievement and promote pupils' achievement through praise whenever appropriate. The School identify the academic levels of students and encourage students by accreditations on a termly basis. Behaviour that undermines the happy environment that is a hallmark of school life, such as bullying, insensitivity, discrimination, bad language or acts of intolerance, will not be accepted.

By knowing every pupil socially, emotionally and academically, we can employ strategies and practices giving the opportunity for each pupil to flourish and acquire the confidence and self-belief to achieve a fulfilling and successful future and to become confident, accomplished and self-valuing young adults. At our school we know and support our pupils with our pastoral care being at the heart of the way we look after our pupils. Our school offers a curriculum which is balanced and broadly based which actively:

- promotes the spiritual, moral, cultural, mental and physical development of pupils at the school and of society
- prepares pupils at the school for the opportunities, responsibilities and experiences of later life.



Student Profile

- Mixed gender, ages 11-16
- Emotional behavioural issues
- History of placement breakdowns
- Learning difficulties
- Has an Education, Health & Care Plan

