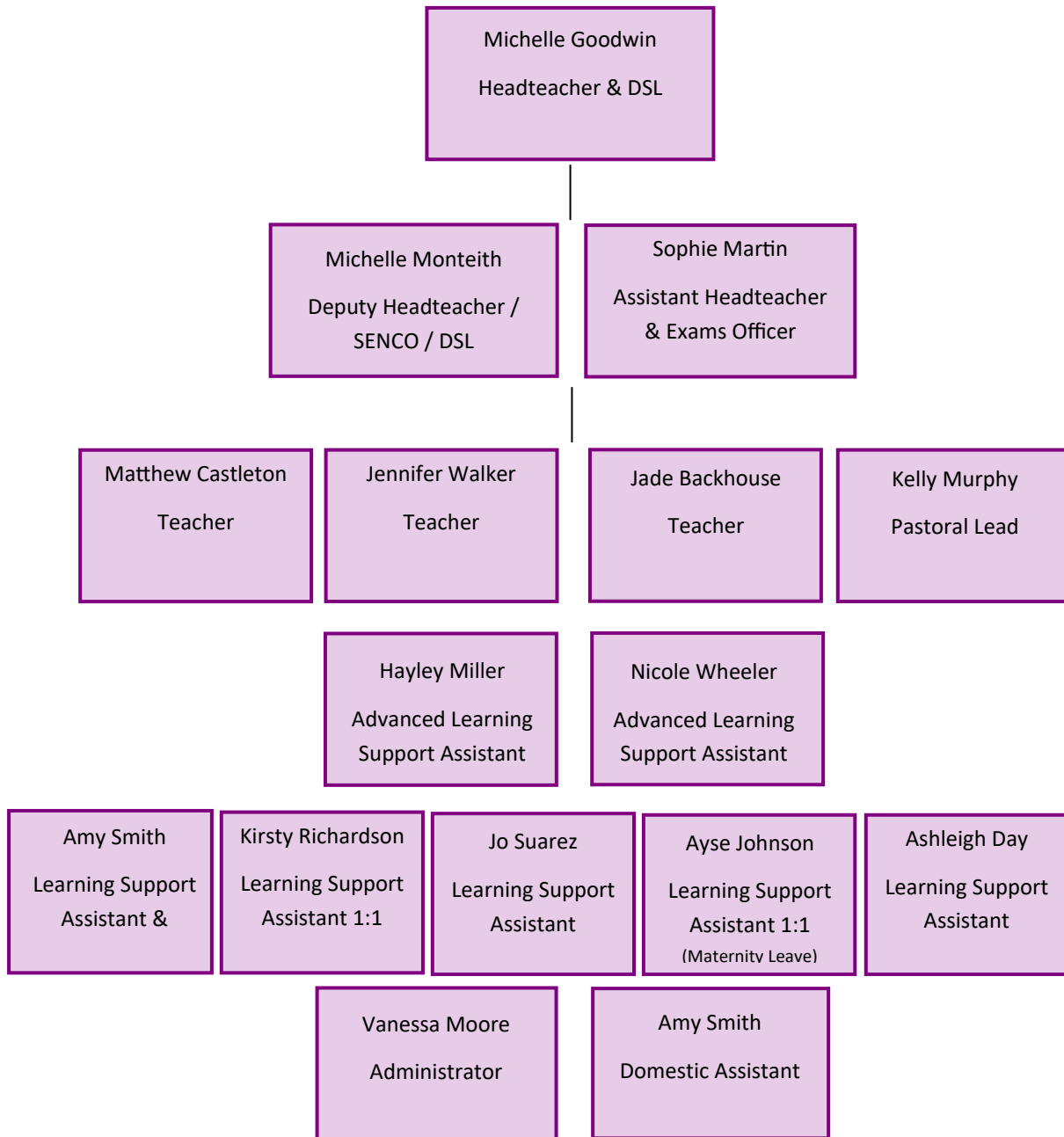


# Scarborough School



# Staffing

**Michelle Goodwin – Headteacher & Designated Safeguarding Lead.** Michelle was promoted to Headteacher in September 2023, after working with the company for many years and teaching a variety of subjects, specialising in Mathematics to GCSE level. Michelle runs our Duke of Edinburgh Award scheme at Bronze level and teaches our Forest School classes. Michelle is also one of our appointed Designated Safeguarding Leads. Qualifications include: BSc (Hons) Maths with QTS, Forest School Leader and Duke of Edinburgh Assessor.

**Michelle Monteith – Deputy Headteacher, SENCO, Deputy Designated Safeguarding Lead.** Michelle studied at Lincoln University to complete her BSc (Hons) in Forensic Science and Psychology. After gaining experience working in schools as an Advanced Teaching Assistant she returned to University to complete a PGCE in Secondary Science. Michelle has been with the school for many years and has taught a variety of subjects, but specialises in Science. Michelle is the appointed SENCO and Deputy Designated Safeguarding Lead for Scarborough School. Qualifications include: BSc (Hons) Forensic Science and Psychology, PGCE Secondary Science.

**Sophie Martin – Assistant Headteacher, Exams Officer and SLT.** Sophie joined us in January 2020 and primarily teaches English. She came to us from another local school where she was teaching classes with a high rate of Pupil Premium, special educational needs and disabilities as well as pupils with English as an additional language. Sophie initially trained at the Royal Military School of Music in Twickenham and spent 12 years as a musician and regular soldier in the army. Sophie left the forces in 2014 to pursue a career in education and after working as an Advanced Teaching Assistant, she went on to complete teacher training with Brighton University gaining her BA (Hons) in Secondary Education (English). She has taught English at several secondary schools across North Yorkshire and the East Riding. Sophie is now part of our Senior Leadership Team along with the Headteacher and Deputy and recently took on additional responsibility as our designated Exams Officer.

**Jennifer Walker – Teacher.** Jenni joined us in October 2023 as our new Maths teacher, Jenni has a wealth of knowledge and experience and very much enjoys working within a SEN setting. Amongst many other qualifications and attended training courses, Jenni has a PGCE in Primary Education, a first class BA (Hons) Degree in Early Childhood Education & Care, a Foundation Degree in Learning Support and Certificate of Higher Education in Humanities.

**Matthew Castleton – Teacher.** Matt joined the team in February 2024 and primarily teaches our Vocational classes along with a variety of other subjects. Matt completed his training in the East Riding and worked as a Vocational Teacher on supply at schools in our local area before being appointed at as a teacher of French and Spanish at Bridlington School. Matt loves working in design and technology and is enjoying sharing his skills and experience with our pupils. Qualifications include: Degree and PGCE in French.

**Jade Backhouse – Teacher.** In September 2024 Jade joined our school as a Teacher. Jade is a passionate, creative and outgoing individual who relishes in her role of making a positive impact in young people's lives through her Design and Technology lessons. Jade is supportive and approachable and enjoys building positive relationships with pupils to enable her to learn their strengths and difficulties and adapt her lessons to suit their needs. Jade has a PGCE in secondary Design and Technology and has previously taught at a local mainstream school.

**Kelly Murphy – Pastoral Lead.** Kelly has worked for the Scarborough School for many years, firstly as a Learning Support Assistant, then an Instructor. Kelly is passionate about mental health and wellbeing and was

most recently promoted to Pastoral Lead to enable her to specialise in this field. Kelly previously worked in early years at a local primary school before joining our team and her qualifications include: NVQ STALIS - Supporting Teaching and Learning in Schools, Intermediate Health and Social Care, Advanced Health and Social Care, Nursery Nursing.

**Hayley Miller – Advanced Learning Support Assistant.** Hayley, who had been working here on a 1:1 basis with a child who needed extra support in school, was then given a permanent role in school as a general Learning Support Assistant. Hayley was recently promoted to Advanced Learning Support Assistant and now also supervises our growing team of LSA's. Hayley had previously worked for many years in a care home setting and is also a qualified hairdresser.

**Jo Suarez – Learning Support Assistant.** Jo originally joined the team as a Learning Support Assistant through a local employment agency before being given a permanent role with us. Jo is a qualified teacher and has worked for many years in primary and secondary schools specialising in educational settings with children with special educational needs including autism.

**Nicole Wheeler – Advanced Learning Support Assistant.** Nicole is one of our hard-working Learning Support Assistants who joined the team in January 2023, she was promoted to an advanced role in October 2024 after proving herself to be a highly valued member of the team. Nicole is currently studying psychology – which is a study of mind and behaviour, she is enjoying sharing her learning and putting into practice her new skills to benefit the pupils in our school.

**Ashleigh Day – Learning Support Assistant.** Ashleigh joined the team in 2025 and is passionate about helping children learn and develop, her goal is to help others see that having special educational needs is not a barrier to anything and that everyone deserves an opportunity to succeed in life. Ashleigh previously had roles in the care sector and at a nursery school, more recently Ashleigh has worked as a Learning Support Assistant in some of the local schools in our area on a temporary basis before joining us here.

**Ayse Johnson – Learning Support Assistant.** Ayse is dedicated to providing 1:1 support to any pupil who needs additional help at school with their learning and any social, emotional and mental health difficulties. Ayse is trained in sign language and is currently studying towards her Teaching Assistant Level 2 qualification. Ayse has previously worked in the care and support sector and has over 12 years' experience in dealing with challenging behaviour and those with additional needs.

**Amy Smith – Learning Support Assistant and Domestic Assistant.** Amy is our newly appointed Learning Support Assistant, Amy has worked here since the beginning of 2024 as our cleaner alongside a second role at another local primary school, however she recently applied for a vacancy here and we were delighted to offer her a full-time job. Amy has worked with children for many years and is using her extensive knowledge and skills to help pupils here thrive and achieve their personal best.

**Kirsty Richardson – Learning Support Assistant.** Kirsty joined us in March 2025 from the Wilf Ward Family Trust where she gained valuable practical skills and experience in supporting individuals with learning difficulties. Through this role Kirsty developed a deep understanding of the importance of empathy, patience and a person-centred approach to care which is easily transferrable to her role here as a 1:1 support assistant. Kirsty is now using her knowledge to make a meaningful difference to the lives of the young people she supports here.

**Vanessa Moore - Administrator.** Vanessa has been our school administrator for over nine years now, she has worked in admin and finance roles since leaving school and worked in a Children's Centre prior to joining us here. Vanessa's qualifications include: Advanced G.N.V.Q in Business Studies and AAT in Accountancy.