



# Southlands School

## Newsletter

Week Commencing 24<sup>th</sup> February 2025

Phone: 01590 675 350 Duty Officer Phone: 07785 521 842

Contact us on: [Southlands.Admin@cambianguroup.com](mailto:Southlands.Admin@cambianguroup.com)

Facebook: [www.facebook.com/cambianguroup](http://www.facebook.com/cambianguroup)

\* Kindness \* Respect \* Resilience \* Safety \* Cherish \*

### Letter from SLT

Dear Parents and Carers,

It has been a busy week at Southlands; it was lovely to see how well our students have settled back into the school routines and lessons, after a week's break.


Please note that your child's Tutor is the main contact should you have anything specific to raise in connection with their education. Should you have a more general query or request please do contact the school on [Southlands.Admin@cambianguroup.com](mailto:Southlands.Admin@cambianguroup.com) Your email will be forwarded to the most relevant staff member to address.

#### Celebration Assembly

Today we held our first Celebration Assembly this year. We have changed the format, after consultation with staff and students. Instead of certificates, staff will now write a personal postcard to students which they will receive in assembly along with 100 Roads tokens. We have also reintroduced the Head of Education Award which will be nominated by staff based on our school values: Resilience, Kindness, Respect, Cherish and Safety. It was wonderful to see such a great turnout and so many postcards being awarded. Claire Bartlett also presented students, who had taken part in our school pantomime with a commemorative booklet, she also presented the prizes for the winners of the creative writing competition.

#### Options Afternoon

We will be holding our Year 9 Options Presentation on Friday 14<sup>th</sup> March at 1.30pm, emails have been sent out to parents. This is a chance to discuss our KS4 curriculum offer Please let the school know if you are able to attend if you have not already done so. Please see below for further information.



# Letter from SLT Continued

## World Book Day

We will be celebrating World Book Day, next Thursday 6<sup>th</sup> March. There will be prizes for the best dressed character and an extra prize for the best dressed class.

This year, we are going to be working as a collective of schools with Wing, Hill House and Grateley to support the 'School in a Bag' (see information below) any donations received will be matched by the Caretech Foundation .

## Uniform reminder

We understand some of our children have particular sensory needs and will need adaptations to their uniform which we will support upon request. Where possible please ensure your child wears the Southlands uniform as this promotes positive school community and sense of belonging. Should your child not be wearing the Southlands uniform then please support your child in adhering to the dress code of black/navy bottoms, white or blue t shirt/blouse and a black or navy top. Most clothing can be bought from any High Street store unless purchase elsewhere is preferred and indicated.

The school supplier is PMG Schoolwear; School specific uniform items must be purchased from them either online at [www.pmgsschoolwear.co.uk](http://www.pmgsschoolwear.co.uk), by telephone on 01425 617277 or by visiting their shop in New Milton which is local to Southlands.

## Pancake Day

This coming week the children will be making pancakes in their cooking lessons and at the end of the lesson they will have a Pancake Race. The winner from each group will then be invited to join a Pancake Race against the staff on Thursday Lunchtime – which is also World Book Day. We are really looking forward to a day of fun and learning.

We wish you all a lovely and safe weekend

## Options Presentation Afternoon

Dear Parents,

We will be holding an Options Presentation Afternoon on the 14<sup>th</sup> March at 1.30- 2.30pm at Southlands School. You are invited to attend with your child, to learn about the options process, find out which courses your child can choose in KS4 and to talk to teachers about the course specifications. You will also be able to take an options booklet home to help support your child to make their choices.

If you are unable to attend, your child will be supported by a TA to attend the presentation and will bring their booklet home, we would be happy to arrange an alternative online session at a later date for you to attend and ask any questions.

Please let us know if you will be attending on the 14<sup>th</sup> with your child or whether you would like an online session.

# Longdown Dairy Farm

I took the lovely KW and KRB to Longdown Dairy Farm for their outdoor learning on Monday. They were able to hold chicks and guinea pigs and feed the baby goats! They also saw rabbits, cows, ducks, pigs and chickens.



For their trip, Year 8 split into separate groups as some wanted to feed the kid goats and others wanted to see the animals and ride the go-karts. Everyone really enjoyed the trip and enjoyed being outside and not being wet. Children in other year groups were lucky and managed to collect some eggs from the chickens.

Lower Phase Group also visited the farm. The students were able to see and get up close with the animals, learning about farm life. The class had the opportunity to gather the eggs that had been laid by the chickens – whilst the chickens were still sat on them! As it was a beautiful day, we were able to enjoy the outdoor activities, including trampolining and racing the go-karts. A good time was had by all.

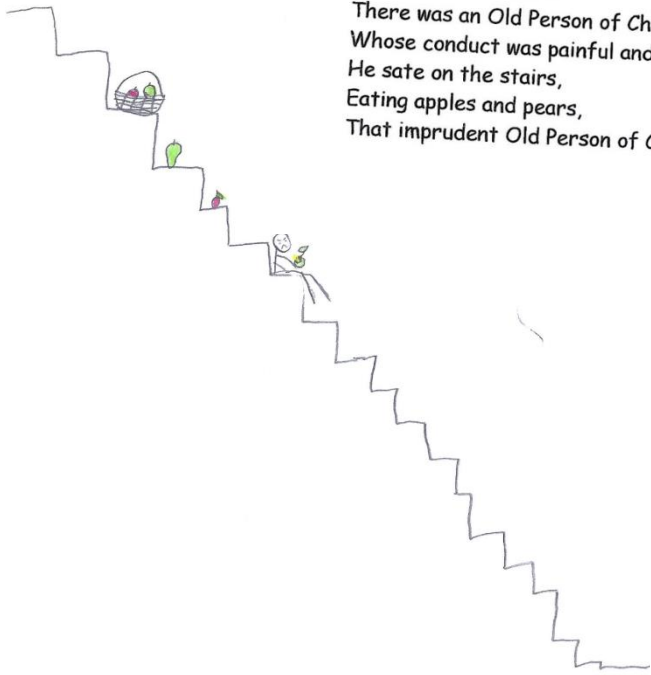


# Primary 1 Limericks

This week in Primary 1's new English topic of nonsense poetry, the children have been learning about limericks. The children picked out their favourite limerick and drew a picture to represent the poem just as Edward Lear did. They have enjoyed the start of this topic, especially the poem 'On the Ning Nang Nong' by Spike Milligan with all its nonsense words!

27/2/25

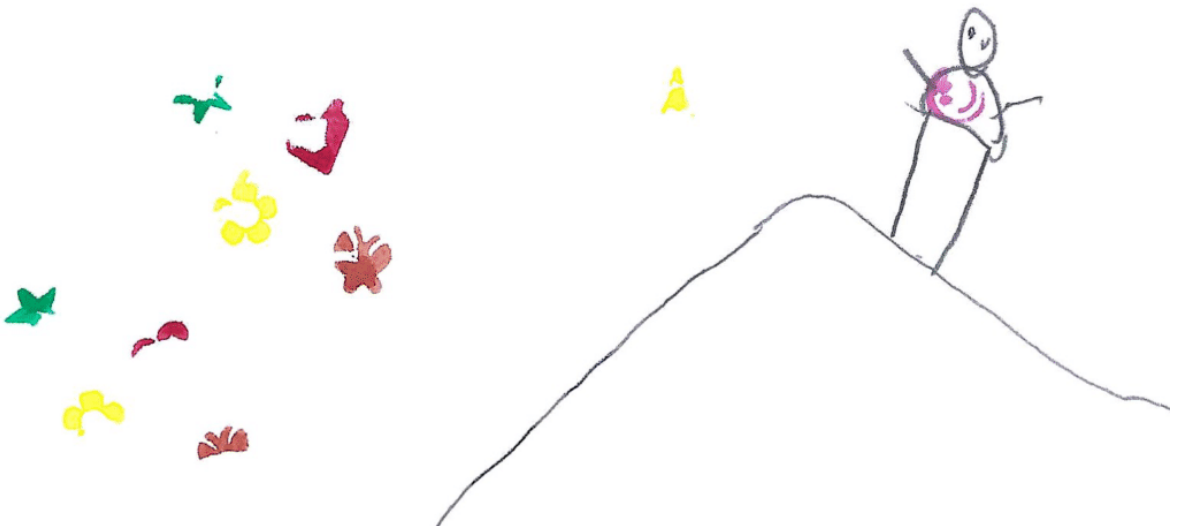
There was an Old Person of Chili,  
Whose conduct was painful and silly,  
He sat on the stairs,  
Eating apples and pears,  
That imprudent Old Person of Chili.



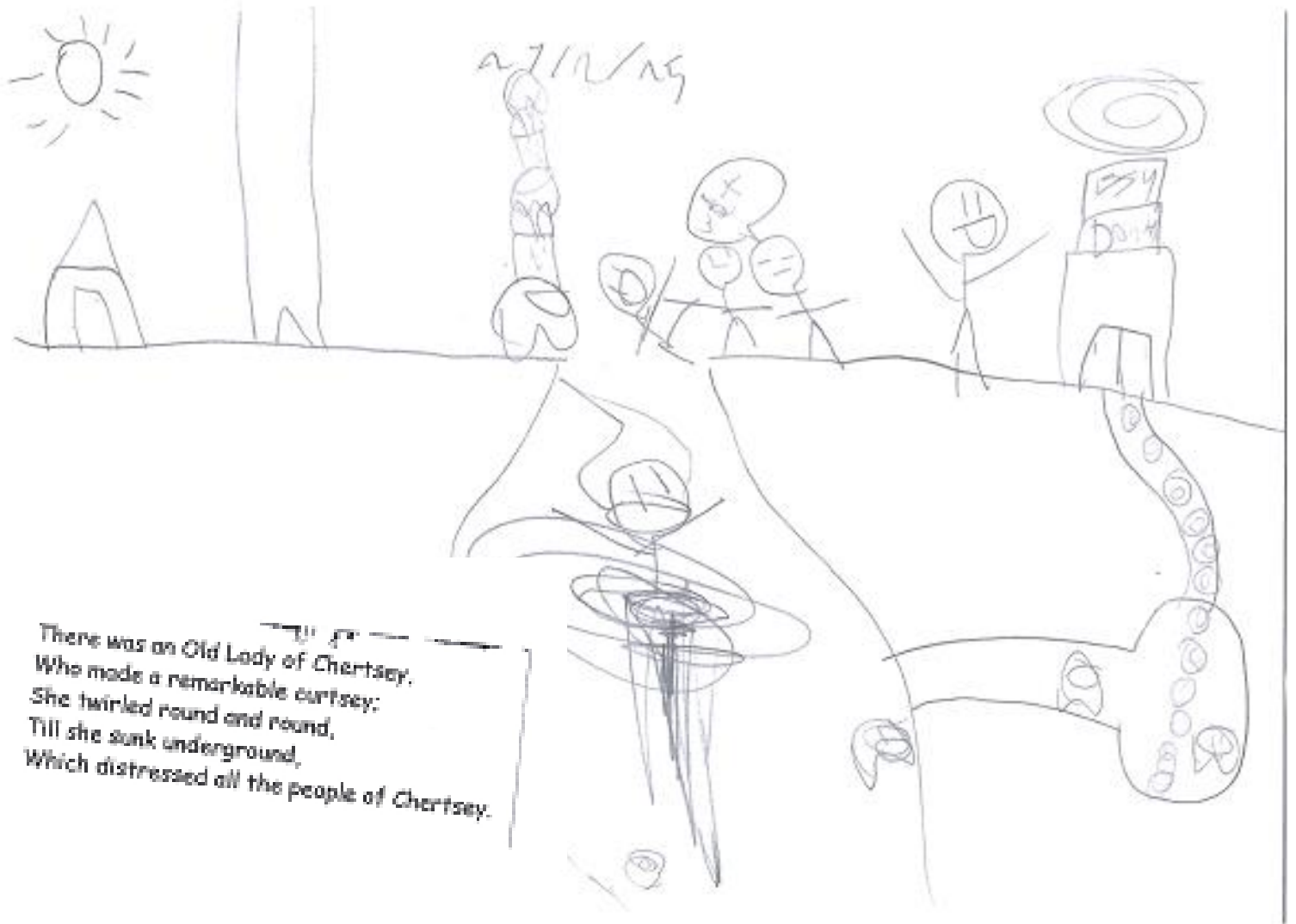
There was a Young Lady of Ryde,  
Whose shoe-strings were seldom untied.  
She purchased some clogs,  
And some small spotted dogs,  
And frequently walked about Ryde.



There was an Old Man on a hill,  
Who seldom, if ever, stood still;  
He ran up and down,  
In his Grandmother's gown,  
Which adorned that Old Man on a hill.



# Primary 1 Limericks - Continued



## Food Bank

Each home has done an amazing job at donating food and household essentials for the food bank in Lymington.

Well done, everyone.



# Setthorns Home

David and Naythan had a nice walk through sunny Lymington.

Naythan has done an amazing job at tie dye in Setthorns



Naythan has baked brownies for desert night on Setthorns.



## Art Classes

**Busy artist at work.**

Our very own artist FF asked if she could paint a giant canvas after seeing the black hole painting in the art room. FF's art teacher provided the materials. The rest is art history....

Honestly, FF took her time and her skill at gradating her water-based paint skills have improved. I am excited to see this completed. Amazing work FF. You look the part; an artist busy at an easel. You have an extremely proud art teacher.



# Careers

Y10 & 11 have had their first Independent Careers Advice



EBP South provide advice & routes that support & inspire young people about future career options and help them on their journey to the world of work.

Career Advice can come from:

- Family & friends
- Teachers & year tutor at school

This meeting allows students to have a conversation with someone from outside your network, independent advice for all year 10 & 11 students.



## SLS Careers & Transition

Website for students, staff, parents & carers



National Careers Week (NCW) is a one-week celebration of careers guidance and free resources in education across the UK.

Students will focus on Workplace Experiences WEX -

- Experience of the workplace can create social capital for young people with more limited networks.
- Experience of the workplace give students the opportunity to develop essential skills including employability skills.

Develops choice for vocational routes – WEX, apprenticeships, college courses, university choices.

# Upcoming Exams Timetable

## May

12 <sup>th</sup>	AM	English Literature Paper 1 Maths FS Level 1 and 2 – Paper 1 – Non-Calculator Maths FS Level 1 and 2 – Paper 2 – Calculator
13 <sup>th</sup>	PM	Triple Biology Paper Combined Science - Paper 1F - Biology
14 <sup>th</sup>	AM	Geography Paper 1: Living with the physical environment
15 <sup>th</sup>	AM	GCSE Maths – Paper 1 – Non-Calculator
16 <sup>th</sup>	AM	English FS Level 1+2 Paper 1 – Reading
	PM	English FS Level 1+2 – Writing
19 <sup>th</sup>	AM	Triple Chemistry Paper 1 Combined Science – Paper 1F – Chemistry
20 <sup>th</sup>	AM	English Literature Paper 2
22 <sup>nd</sup>	AM	Triple Physics Paper 1 Combined Science – Paper 1F – Physics
23 <sup>rd</sup>	AM	English Language Paper 1
31 <sup>st</sup>		<b>GCSE Art and Design and Photography submission</b>

## June

4 <sup>th</sup>	AM	GCSE Maths Paper 2 – Calculator
6 <sup>th</sup>	AM	English Language Paper 2
	PM	Geography Paper 2 – Challenges in the human environment
9 <sup>th</sup>	AM	Triple Biology Paper 2 Combined Science – Paper 2F – Biology
11 <sup>th</sup>	AM	GCSE Maths Paper 3 – Calculator
11 <sup>th</sup>	PM	<b>CONTINGENCY DAY</b>
12 <sup>th</sup>	AM	Geography Paper 3 – Geographical Applications
13 <sup>th</sup>	AM	Triple Chemistry Paper 2 Combined Science – Paper 2F – Chemistry
16 <sup>th</sup>	AM	Triple Physics Paper 2 Combined Science – Paper 2F - Physics
25 <sup>th</sup>	All Day	<b>CONTINGENCY DAY</b>



# World Book Day

Thursday 6th March 2025



## Prizes for Best Dressed:

Key Stage 2

Key Stage 3

Key Stage 4



£10 book voucher for each winner!

## Prizes for Best Effort as a group:



A magazine of choice for each member of the group.

Any queries please email Claire Bartlett at:

Claire.Bartlett@cambiangroup.com

A voluntary donation is welcomed to help aid School in a Bag to help provide resources to poor and vulnerable children. <https://www.schoolinabag.org/>

THE NECESSITY OF EDUCATION

For the million children around the world not having access to substantial and effective learning has an impact on all aspects of their life, and their future prospects.

 <b>GENDER GAP</b> Many girls, especially in developing countries, can't go to school at all. Only 86 percent of countries have reached gender parity in access to elementary school.	 <b>FUTURE PROSPECTS</b> In developing low income countries, every additional year of education can increase a person's future income by an average of 8%.	 <b>SOCIAL FREEDOM</b> When young people are not engaged in the education system or the labour market, they become disconnected from society, gradually losing any potential of developing new skills that could help them find meaningful employment.	 <b>FOOD SECURITY</b> Children need food in order to grow, thrive, and protect from diseases. School food and nutrition programmes also support local agriculture, strengthen and diversify local food systems and help meet people out of poverty by providing food for school meals from local smallholder farmers.	 <b>HEALTH &amp; WELLBEING</b> Women with a primary school education are 43% more likely to know that condoms can reduce their risk of contracting HIV/AIDS, and education can help decrease the spreading of the virus by promoting safer sexual practices.
---	--	--	---	--

# Southlands School Term Dates 24 - 25

## Southlands School

Term Dates 2024 - 2025



September 2024						
Mo	Tu	We	Th	Fr	Sa	Su
						1
2 #	3	4	5	6	7	8
9	10	11	12	13	14	15
16	17	18	19	20	21	22
23	24	25	26	27	28	29
30						

October 2024						
Mo	Tu	We	Th	Fr	Sa	Su
	1	2	3	4	5	6
7	8	9	10	11	12	13
14	15	16	17	18	19	20
21	22	23	24 *	25	26	27
28	29	30	31			

November 2024						
Mo	Tu	We	Th	Fr	Sa	Su
				1	2	3 #
4	5	6	7	8	9	10
11	12	13	14	15	16	17
18	19	20	21	22	23	24
25	26	27	28	29	30	

December 2024						
Mo	Tu	We	Th	Fr	Sa	Su
						1
2	3	4	5	6	7	8
9	10	11	12	13	14	15
16	17	18	19	20 *	21	22
23	24	25	26	27	28	29
30	31					

January 2025						
Mo	Tu	We	Th	Fr	Sa	Su
		1	2	3	4	5 #
6	7	8	9	10	11	12
13	14	15	16	17	18	19
20	21	22	23	24	25	26
27	28	29	30	31		

February 2025						
Mo	Tu	We	Th	Fr	Sa	Su
					1	2
3	4	5	6	7	8	9
10	11	12	13	14 *	15	16
17	18	19	20	21	22	23 #
24	25	26	27	28		

March 2025						
Mo	Tu	We	Th	Fr	Sa	Su
					1	2
3	4	5	6	7	8	9
10	11	12	13	14	15	16
17	18	19	20	21	22	23
24	25	26	27	28	29	30
31						

April 2025						
Mo	Tu	We	Th	Fr	Sa	Su
	1	2	3	4 *	5	6
7	8	9	10	11	12	13
14	15	16	17	18	19	20
21 #	22	23	24	25	26	27
28	29	30				

May 2025						
Mo	Tu	We	Th	Fr	Sa	Su
			1	2 *	3	4
5 #	6	7	8	9	10	11
12	13	14	15	16	17	18
19	20	21	22	23 *	24	25
26	27	28	29	30	31	

June 2025						
Mo	Tu	We	Th	Fr	Sa	Su
						1 #
2	3	4	5	6	7	8
9	10	11	12	13	14	15
16	17	18	19	20	21	22
23	24	25	26	27	28	29
30						

July 2025						
Mo	Tu	We	Th	Fr	Sa	Su
	1	2	3	4	5	6
7	8	9	10	11	12	13
14	15	16	17	18 *	19	20
21	22	23	24	25	26	27
28	29	30	31			

August 2025						
Mo	Tu	We	Th	Fr	Sa	Su
				1	2	3
4	5	6	7	8	9	10
11	12	13	14	15	16	17
18	19	20	21	22	23	24
25	26	27	28	29	30	31

- School Holidays
- Public Holidays
- Inset Days

- # 38 Week Residential Evening Return
- \* 38 Week Residential Leave

# EMBRACING AUTISM

**Three days that focus on skills and strategies**, for parents, carers and professionals supporting an autistic young person. Hampshire CAMHS Colleagues will be hosting these days alongside parents / carers with lived experience.

Supporting your autistic child to thrive - adapting to meet the needs of the autistic YP and practical strategies. Led by Dr Catherine Robson - Hampshire CAMHS.

Support for SEN in education & what to do if it's not working. Led by Gayle Moir, SENDIASS Services Manager. (not on 14 March)

Understanding autistic burnout, what it is, why it happens, why it's different to depression, recovery, safe spaces, and prevention. Led by Viv Dawes - Advocate/trainer/author.

**9.30am - 3.30pm**

**Friday, 14 March, 2025**

Proteus Creation Space,  
Council Road, Basingstoke  
RG21 3DH



**Wednesday, 9 July, 2025**

Waterlooville Community  
Centre, 10 Maurepas Way,  
Waterlooville, PO7 7AY

**Friday, 14 November, 2025**

St Peter Church Conference  
Centre, Jewry Street,  
Winchester, SO23 8RY

**Tickets £20**  
Tea and coffee  
included



For more information and to book a place go to  
[www.hampshirecamhs.nhs.uk/events/](http://www.hampshirecamhs.nhs.uk/events/)

# Southlands Children's Home —Safeguarding Poster

## Who can I report a concern to?



Jack Murphy  
Registered Manager  
01590 675350 / Ext 56345  
Jack.Murphy2@cambiagroup.com



Lauren Stublely  
Deputy Head of Care  
01590 675350 / Ext 56364  
Lauren.Stublely@cambiagroup.com

## I can also report concerns to..



James Watson  
Regional Care Lead

James.watson@cambiagroup.com



Alison Priddle  
Principal & Responsible Individual

01590 675350 / Ext 56301 / 07711 765999

Alison.Priddle@cambiagroup.com

All safeguarding concerns to be reported within **1 hour**  
Staff concerns ONLY to be reported to Registered Manager/Head of Care/  
Principal/Regional Lead

# Southlands School - (Education) Safeguarding Poster

## Southlands Designated Safeguarding Leads



Holly Stevenson

Named Designated Safeguarding Lead

01590 675350 / Ext 56355

Holly.Stevenson@cambianguroup.com



Alison Priddle

Principal, Responsible Individual and DSL

01590 675350 / Ext 56301

Alison.Priddle@cambianguroup.com

## Southlands Deputy Designated Safeguarding Leads



Jess Holloway

Co- Head of Education

01590675350/56328

Jess.Holloway@cambianguroup.com



Holly Jeffery

DDSL / DBSL

01590 675350 / Ext 56355

Holly.Jeffery@cambianguroup.com



Sorina Ciorteanu

DDSL / DBSL

01590 675350 / Ext 56355

Sorina.Ciorteanu@cambianguroup.com

Regional Lead - James Watson / James.Watson@cambianguroup.com

All safeguarding concerns to be reported to D/DSL's within **1 hour**  
Staff concerns ONLY to be reported to DSL/Principal/Regional Lead