



Southlands School

Newsletter

Week Commencing 3rd February 2025

Phone: 01590 675 350 Duty Officer Phone: 07785 521 842

Contact us on: Southlands.Admin@cambianguroup.com

Facebook: www.facebook.com/cambianguroup

* Kindness * Respect * Resilience * Safety * Cherish *


Letter from SLT

We have had such a good week with the trips, activities and learning taking place in school time, which we were able to share with Ofsted, as part of their inspection week with us. The feedback we have received around the children and the meeting they held with the Student Council has been really heart-warming. The evaluation from the inspectors included, 'how the children felt able to express themselves and how they are really proud ambassadors of their school'. We are awaiting the full report which can take eighteen working days to go through the quality assurance processes. We will of course share the full outcomes with you once we receive the final report.

Workshop and Parent/Carers Council Meeting

Thank you to those who attended the workshop on Comic Strip Conversations and Social Stories, we do hope you found this useful. If you have a suggestion for any future workshops which you may find supportive then please do send these through to Southlands.Admin@Cambianguroup.com.

The Parent Council minutes will be circulated and, as always, please inform the office of any items you wish to be added to an agenda for the next meeting.



Letter from SLT Continued

Parent/Carer's Evening

We look forward to welcoming you to Parent/Carer's evening on **Tuesday 11th February 3.30pm – 5.30pm**

We welcome conversations with you and your child together. However, should you feel this is not appropriate for your individual child, your child can be supported by staff whilst you speak with the teachers.

Please do contact the Office on Monday should you wish your child to be supported by staff whilst you are speaking with the teachers, so arrangements can be put in place.

As the articles in this Newsletter show the children had a great time last weekend. Coach house had an amazing time celebrating the Chinese New Year, learning all about a new culture. Setthorns went to watch the Queen tribute; it is safe to say Jack M is very jealous! The majority of the children are home this weekend, so it will be a quiet one here planning for the week ahead.

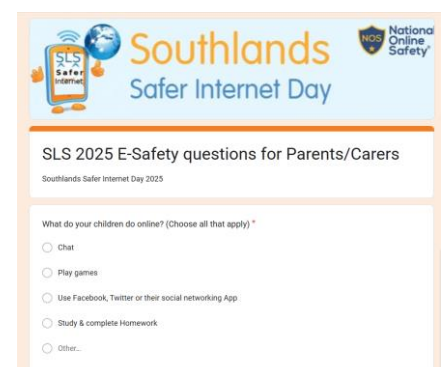
Please note the summer exam timetable at the end of the newsletter.

Have a lovely and safe weekend!

Safer Internet Day - Southlands



[Click here for family resources](#)



WS Mudford Trip

WS had a trip to Mudford Quay this week and was taken by surprise at the speed the tide came in!

He got very wet feet and decided not to underestimate the waves!



Residential Trips

Last Saturday on the 1st February CM attended Chinese New Year celebrations, with many traditional dances, martial arts exhibitions and more cultural exchange. She even met the Southampton Mayor (picture on the right, not below!)

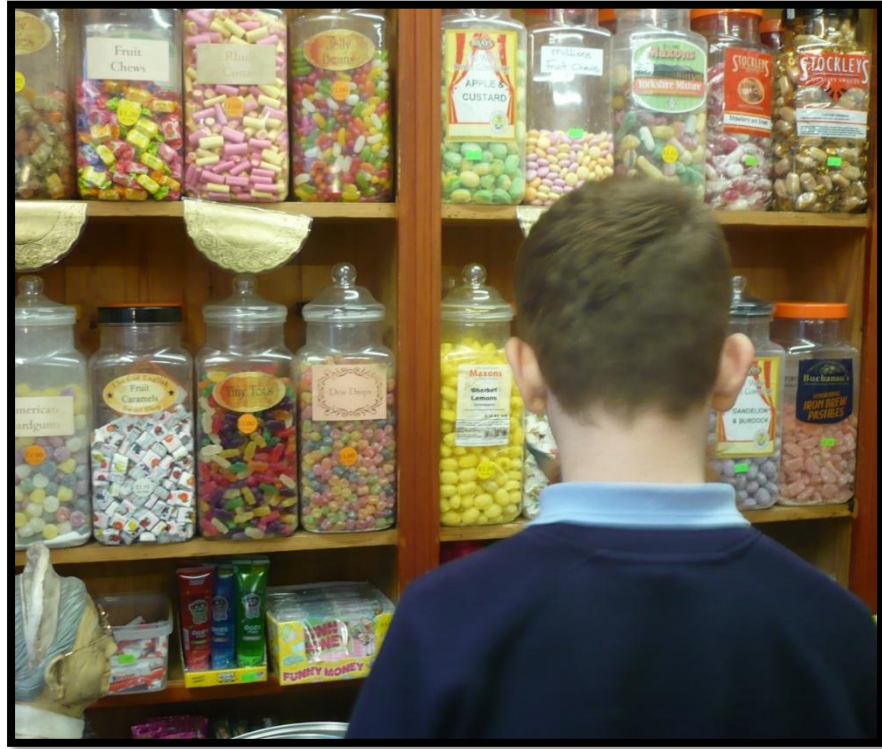


Then, on 5th February we invited Setthorns for a challenge in an Escape Room, we worked as a team and managed to escape with 18min left on the clock.

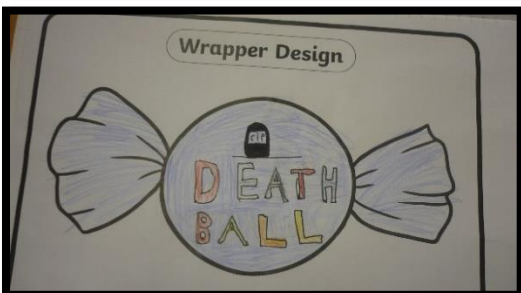
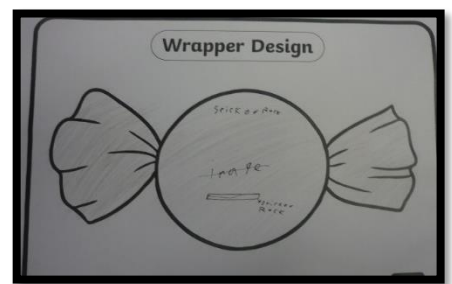


Year 8 – Sweet Shop Trip

As part of our studies of Roald Dahl's *Autobiography* the Year 8 students have completed sweet tasting in lessons. They have then moved onto creating their own disgusting sweets including revolting ingredients and explaining how they are made.



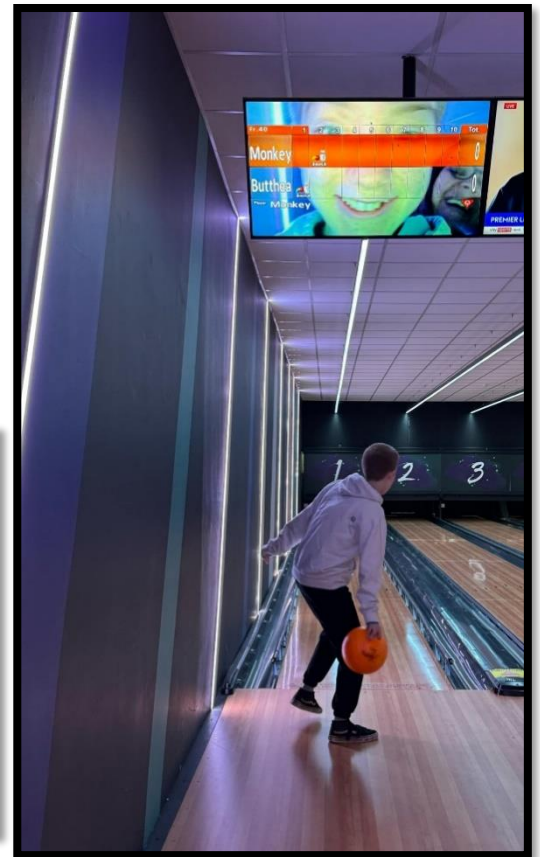
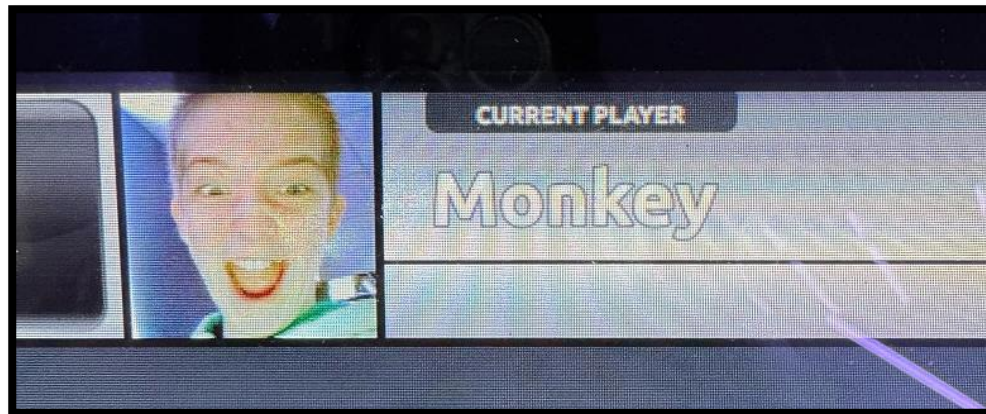
They have designed sweet wrappers and will complete presentations next week telling the rest of the group about the sweet they have created. All students behaved impeccably on the trip.



Bowling Trip

On Wednesday AP was taken for an off-site bowling trip to Tenpin in Southampton. They were facing off against Jade for the title.

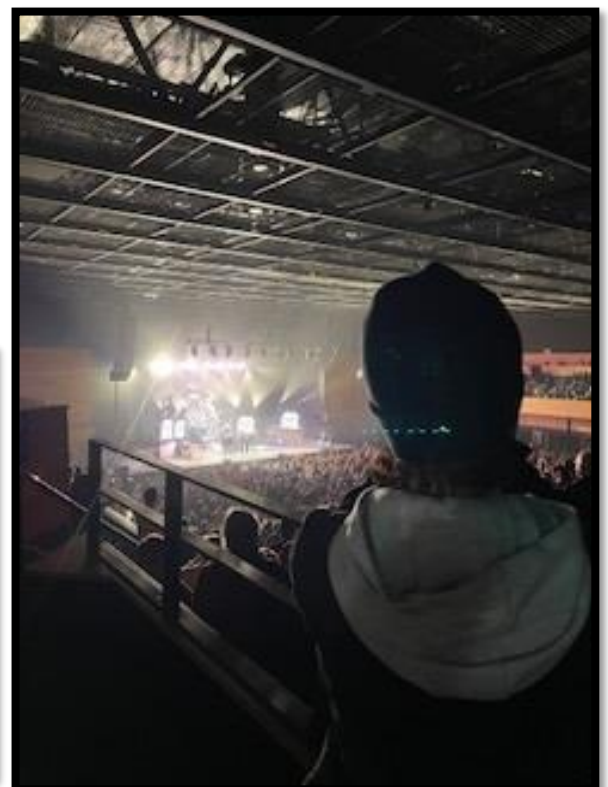
They both had a great time but refuse to divulge who won in the end!



DT Trip to Bournemouth

Sue took DT to the Queen Extravaganza at the BIC in Bournemouth on Saturday.

He loved the concert and said it was awesome!



Upcoming Exams Timetable

May

12th AM	English Literature Paper 1 Maths FS level 1 and 2-Paper 1 - Non-Calculator Maths FS level 1 and 2- Paper 2 - Calculator
13th PM	Triple Biology paper Combined science: Paper 1F: Biology
14th AM	Geography Paper 1: Living with the physical environment
15th AM	GCSE Maths - Paper 1 - Non Calculator
16th AM PM	English FS level 1 +2 Paper 1 - Reading English FS level 1 +2 - Writing
19th AM	Triple Chemistry paper 1 Combined science: Paper 1F: Chemistry
20th AM	English Literature Paper 2
22nd AM	Triple Physics paper 1 Combined science: Paper 1F: Physics
23rd AM	English Language paper 1
31st	GCSE Art and design and photography submission

June

4th AM	GCSE Maths Paper 2 - Calculator
6th AM PM	English Language Paper 2 Geography Paper 2: Challenges in the human environment
9th AM	Triple Biology paper 2 Combined science: Paper 2F: Biology
11th AM	GCSE Maths Paper 3 - Calculator
12th AM	Geography Paper 3: Geographical applications
13th AM	Triple Chemistry paper 2 Combined science: Paper 2F: Chemistry
16th AM	Triple Physics paper 2 Combined science: Paper 2F: Physics



Cannon Street East Car Park, Lymington, SO41 9BR
01590 610008 – admin@basicsbank.org.uk
www.basicsbank.org.uk
Charity Number: 1150170

The New Forest Basics Bank supports local families and people in crisis. Your donations are crucial: we could not do what we do without you! **Thank you!!**

Collection for Food Bank

Urgent Items needed:

Tinned hot meat / Cold meat

Tinned tuna or other fish

Cereals (preferably not oats)

Washing up liquid

Clothes washing detergent

Shampoo / Toothpaste

Instant coffee / Tea bags

Jam / Marmalade

Tinned soup / Tinned pasta

Baked beans / Tinned pulses

Cordial / Long life juice

EMBRACING AUTISM

Three days that focus on skills and strategies, for parents, carers and professionals supporting an autistic young person. Hampshire CAMHS Colleagues will be hosting these days alongside parents / carers with lived experience.

Supporting your autistic child to thrive - adapting to meet the needs of the autistic YP and practical strategies. Led by Dr Catherine Robson - Hampshire CAMHS.

Support for SEN in education & what to do if it's not working. Led by Gayle Moir, SENDIASS Services Manager. (not on 14 March)

Understanding autistic burnout, what it is, why it happens, why it's different to depression, recovery, safe spaces, and prevention. Led by Viv Dawes - Advocate/trainer/author.

9.30am - 3.30pm

Friday, 14 March, 2025

Proteus Creation Space,
Council Road, Basingstoke
RG21 3DH



Wednesday, 9 July, 2025

Waterlooville Community
Centre, 10 Maurepas Way,
Waterlooville, PO7 7AY

Friday, 14 November, 2025

St Peter Church Conference
Centre, Jewry Street,
Winchester, SO23 8RY

Tickets £20
Tea and coffee
included



For more information and to book a place go to
www.hampshirecamhs.nhs.uk/events/

Southlands School Term Dates 24 - 25

Southlands School

Term Dates 2024 - 2025



September 2024						
Mo	Tu	We	Th	Fr	Sa	Su
						1
2 #	3	4	5	6	7	8
9	10	11	12	13	14	15
16	17	18	19	20	21	22
23	24	25	26	27	28	29
30						

October 2024						
Mo	Tu	We	Th	Fr	Sa	Su
	1	2	3	4	5	6
7	8	9	10	11	12	13
14	15	16	17	18	19	20
21	22	23	24 *	25	26	27
28	29	30	31			

November 2024						
Mo	Tu	We	Th	Fr	Sa	Su
				1	2	3 #
4	5	6	7	8	9	10
11	12	13	14	15	16	17
18	19	20	21	22	23	24
25	26	27	28	29	30	

December 2024						
Mo	Tu	We	Th	Fr	Sa	Su
						1
2	3	4	5	6	7	8
9	10	11	12	13	14	15
16	17	18	19	20 *	21	22
23	24	25	26	27	28	29
30	31					

January 2025						
Mo	Tu	We	Th	Fr	Sa	Su
		1	2	3	4	5 #
6	7	8	9	10	11	12
13	14	15	16	17	18	19
20	21	22	23	24	25	26
27	28	29	30	31		

February 2025						
Mo	Tu	We	Th	Fr	Sa	Su
					1	2
3	4	5	6	7	8	9
10	11	12	13	14 *	15	16
17	18	19	20	21	22	23 #
24	25	26	27	28		

March 2025						
Mo	Tu	We	Th	Fr	Sa	Su
					1	2
3	4	5	6	7	8	9
10	11	12	13	14	15	16
17	18	19	20	21	22	23
24	25	26	27	28	29	30
31						

April 2025						
Mo	Tu	We	Th	Fr	Sa	Su
	1	2	3	4 *	5	6
7	8	9	10	11	12	13
14	15	16	17	18	19	20
21 #	22	23	24	25	26	27
28	29	30				

May 2025						
Mo	Tu	We	Th	Fr	Sa	Su
			1	2 *	3	4
5 #	6	7	8	9	10	11
12	13	14	15	16	17	18
19	20	21	22	23 *	24	25
26	27	28	29	30	31	

June 2025						
Mo	Tu	We	Th	Fr	Sa	Su
						1 #
2	3	4	5	6	7	8
9	10	11	12	13	14	15
16	17	18	19	20	21	22
23	24	25	26	27	28	29
30						

July 2025						
Mo	Tu	We	Th	Fr	Sa	Su
	1	2	3	4	5	6
7	8	9	10	11	12	13
14	15	16	17	18 *	19	20
21	22	23	24	25	26	27
28	29	30	31			

August 2025						
Mo	Tu	We	Th	Fr	Sa	Su
				1	2	3
4	5	6	7	8	9	10
11	12	13	14	15	16	17
18	19	20	21	22	23	24
25	26	27	28	29	30	31

- School Holidays
- Public Holidays
- Inset Days

- # 38 Week Residential Evening Return
- * 38 Week Residential Leave

Southlands Children's Home —Safeguarding Poster

Who can I report a concern to?



Jack Murphy
Registered Manager
01590 675350 / Ext 56345
Jack.Murphy2@cambianguroup.com



Lauren Stubley
Deputy Head of Care
01590 675350 / Ext 56364
Lauren.Stubley@cambianguroup.com

I can also report concerns to..



James Watson
Regional Care Lead

James.watson@cambianguroup.com



Alison Priddle
Principal & Responsible Individual
01590 675350 / Ext 56301 / 07711 765999
Alison.Priddle@cambianguroup.com

All safeguarding concerns to be reported within **1 hour**
Staff concerns ONLY to be reported to Registered Manager/Head of Care/
Principal/Regional Lead

Southlands School - (Education) Safeguarding Poster

Southlands Designated Safeguarding Leads



Holly Stevenson

Named Designated Safeguarding Lead

01590 675350 / Ext 56355

Holly.Stevenson@cambianguroup.com



Alison Priddle

Principal, Responsible Individual and DSL

01590 675350 / Ext 56301

Alison.Priddle@cambianguroup.com

Southlands Deputy Designated Safeguarding Leads



Jess Holloway

Co- Head of Education

01590675350/56328

Jess.Holloway@cambianguroup.com



Holly Jeffery

DDSL / DBSL

01590 675350 / Ext 56355

Holly.Jeffery@cambianguroup.com



Sorina Ciorteanu

DDSL / DBSL

01590 675350 / Ext 56355

Sorina.Ciorteanu@cambianguroup.com

Regional Lead - James Watson / James.Watson@cambianguroup.com

All safeguarding concerns to be reported to D/DSL's within **1 hour**
Staff concerns ONLY to be reported to DSL/Principal/Regional Lead